

UNDER DEVELOPMENT

80 & 90 frame Motors  
commercially available!

**now!**

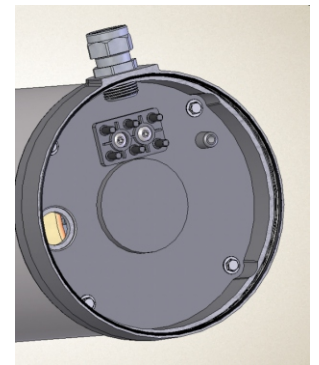
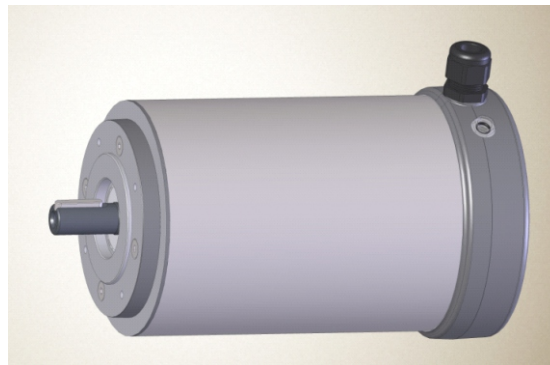
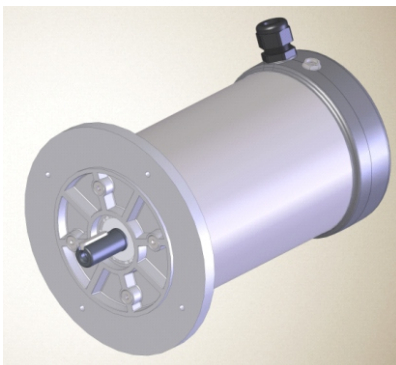
# INFORMATION SHEET

Washdown motors for Food Industry  
Heavy duty applications such as food processing.

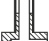
Type	Output		Frame Size	Speed		Current 50Hz				60Hz	Power Factor	Efficiency (at 50Hz)			Torque	Ratio			Weight
	at 50Hz	at 60Hz		at 50Hz	at 60Hz	at 380V	at 400V	at 415V	at 460V			Class	100% Load %	75% Load %		50% Load %	Start. current	Start. torque	
	kW	kW		rpm	rpm	A	A	A	A	cosφ		%	%	Nm	-	-	-	kg	
2pole 3000rpm/3600rpm, TENV, IP66 (IP69K), class F (155°C) / temperature rise 105K, 3x PTCs included																			
SSM80M02K	0.75	0.75		2935	3540	1.86	1.77	1.70	1.51	0.76	IE3	80.7	78.0	72.6	2.44	12.51	6.84	7.41	22
SSM80M02	1.1	1.1	80M	2900	3535	2.46	2.33	2.25	2.03	0.81	IE3	84.1	82.9	79.6	3.62	10.94	5.85	5.84	24
SSM90S02	1.5	1.5	90S	2900	3520	2.98	2.83	2.73	2.44	0.9	IE3	85.0	84.8	83.8	4.94	8.66	2.87	3.89	34
SSM90L02	2.2	2.2	90L	2930	3510	4.75	4.51	4.35	3.92	0.82	IE3	85.9	83.7	78.1	7.17	11.43	4.14	5.62	36
SSM100L02	3	3	100L	2850							IE3								
4pole 1500rpm/1800rpm, TENV, IP66 (IP69K), class F (155°C) / temperature rise 105K, 3x PTCs included																			
SSM80M04K	0.55	0.55		1440	1740	1.59	1.51	1.46	1.28	0.7	IE2	75.0	74.7	67.2	3.65	7.46	4.85	4.84	22
SSM80M04	0.75	0.75	80M	1440	1740	1.89	1.80	1.73	1.56	0.73	IE3	82.5	81.5	77.0	4.98	7.77	4.64	4.81	22
SSM90S04	1.1	1.1	90S	1440	1750	2.43	2.31	2.22	1.98	0.82	IE3	84.1	85.6	85.0	7.30	6.98	2.67	3.33	32
SSM90L04	1.5	1.5	90L	1450	1760	4.18	3.97	3.83	3.42	0.64	IE3	85.3	83.0	82.0	9.88	7.48	4.02	4.88	37
SSM100L04K	2.2	2.2	100L	1440							IE3								
SSM100L04	3	3	100L	1440							IE3								
6pole 750rpm/900rpm, TENV, IP66 (IP69K), class F (155°C) / temperature rise 105K, 3x PTCs included																			
SSM80M06K	0.37	0.37		940	1160	1.20	1.14	1.10	1.05	0.64	IE3	73.0	68.8	63.1	3.76	4.90	3.51	3.63	22
SSM80M06	0.55	0.55	80M	940	1140	1.78	1.69	1.63	1.47	0.62	IE3	76.0	75.7	70.9	5.59	4.87	3.66	3.73	23
SSM90S06	0.75	0.75	90S	960	1160	2.30	2.18	2.10	1.87	0.63	IE3	78.9	76.4	72.8	7.46	5.36	2.61	3.31	32
SSM90L06	1.1	1.1	90L	950	1160	3.39	3.22	3	2.76	0.61	IE3	81.0	79.3	74.8	11.06	4.91	3.42	3.38	37
SSM100L06	1.5	1.5	100L	950							IE3								

**Up to 2.2kW wound for 230/400V 50Hz, 460V 60Hz**  
**3kW motors wound for 400/690V 50Hz, 460V 60Hz**

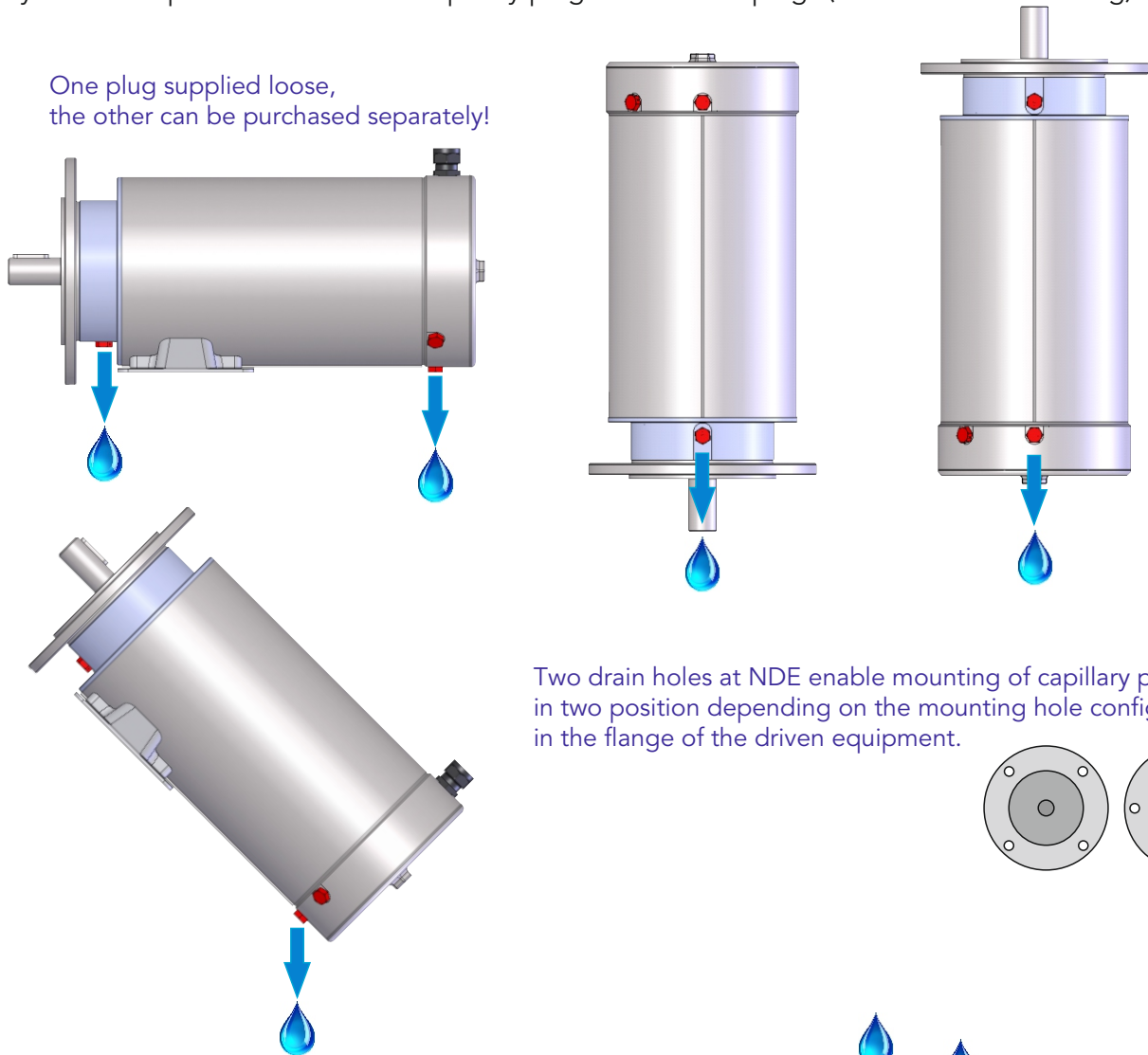
- Stainless steel Grade 304
- Suitable for Food Zone 1, 2 & 3
- True IEC motor construction
- Suitable for VSD operation
- Protection IP66
- Efficiency class IE3 (le2)
- Full ErP compliance
- CE Marking
- Exceptional resistance against water penetration
- Smooth TENV design to comply with hygienic standards
- Drop-in replacement for standard IEC motors
- Low losses mean low heat dissipation
- Meets food industry requirement for cool performance
- Designed for hot water (80°C) jet pressure washing
- Compliant with DIN 40050-9 standard for IP69K



Triple protection against water penetration  
(slinger, long path, shaft seal from the inside)  
Quality ball bearings lubricated for life  
Conventional 6 pin Terminal Block

The motors are equipped with 3 off drain holes which as standard come plugged with solid stainless steel screws. A capillary drain plug is supplied loose (can be found inside the terminal box in a plastic bag). 

- You may decide not to use the capillary plug at all.
- You may decide to use the capillary plug in the lowest point (depends on the mounting position)
- You may decide to purchase additional capillary plug and use two plugs (for horizontal mounting)



Two drain holes at NDE enable mounting of capillary plug in two position depending on the mounting hole configuration in the flange of the driven equipment.

Additionally there is a drain canal in the flange plugged with a grub screw (at 80 & 90 frame) or rubber plug (at 100 frame) which you may wish to leave open if the motor is vertically mounted with shaft up and the (dish-like) flange would be subject to periodical flooding during washing cycle:



Regal Beloit BV  
 P.O. Box 51  
 Mors 2  
 NL-7150 AB Eibergen  
 The Netherlands  
 Tel +31-(0)545 464600  
 www.regalbeloit.eu

A Regal Brand

**REGAL**